




# INDOOR/OUTDOOR

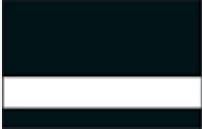








## Laser XT Acrylic

### UV Stable

#### Microsurfaced Impact Modified Acrylic

#### Matte Non-Glare, Gloss, Brushed Metal, Patterned

	L-100-116	Duets Laser XT Black/White 1/16" 2-Ply <b>Normally Stock Product</b>
	L-100-118	Duets Laser XT Black/White 1/8" 2-Ply
	L-100-118-T	Duets Laser XT Black/White 1/8" 3-Ply
	L-100-126	Duets Laser XT Black/Gold 1/16" 2-Ply
	L-100-146	Duets Laser XT Black/Yellow 1/16" 2-Ply
	L-100-196	Duets Laser XT Black/Silver 1/16" 2-Ply
	L-100-626	Duets Laser XT Black/Orange 1/16" 2-Ply

	L-101-116	Duets Laser XT Gloss Black/White 1/16" 2-Ply
	L-101-118	Duets Laser XT Gloss Black/White 1/8" 2-Ply
	L-101-126	Duets Laser XT Gloss Black/Gold 1/16" 2-Ply
	L-102-106	Duets Laser XT Red/Black 1/16" 2-Ply
	L-102-116	Duets Laser XT Red/White 1/16" 2-Ply <b>Normally Stock Product</b>
	L-102-118	Duets Laser XT Red/White 1/8" 2-Ply
	L-102-118-T	Duets Laser XT Red/White 1/8" 3-Ply
	L-102-146	Duets Laser XT Red/Yellow 1/16" 2-Ply <b>Normally Stock Product</b>
	L-103-116	Duets Laser XT Orange/White 1/16" 2-Ply <b>Normally Stock Product</b>



L-103-118

**Duets Laser XT Orange/White 1/8" 2-Ply**



L-103/111-106

**Duets Laser XT Orange/Black 1/16" 2-Ply**

**Normally Stock Product**



L-104-116

**Duets Laser XT Blue/White 1/16" 2-Ply**



L-104-118

**Duets Laser XT Blue/White 1/8" 2-Ply**



L-104-118-T

**Duets Laser XT Blue/White 1/8" 3-Ply**



L-104-146

**Duets Laser XT Blue/Yellow 1/16" 2-Ply**



L-105-116

**Duets Laser XT Sapphire/White 1/16" 2-Ply**



L-105-118

**Duets Laser XT Sapphire/White 1/8" 2-Ply**



L-106-116

**Duets Laser Indoor Navy/White 1/16" 2-Ply**

**Normally Stock Product**



L-107-116

**Duets Laser XT Spring Green/White 1/16" 2-Ply**

**Normally Stock Product**



L-107-118

**Duets Laser XT Spring Green/White 1/8" 2-Ply**



L-108-116

**Duets Laser XT Evergreen/White 1/16" 2-Ply**



L-108-118

**Duets Laser XT Evergreen/White 1/8" 2-Ply**



L-109-116

**Duets Laser XT Chocolate Brown/White 1/16" 2-Ply**



L-109-118

**Duets Laser XT Chocolate Brown/White 1/8" 2-Ply**



L-110-116

**Duets Laser XT Brown/White 1/16" 2-Ply**



L-110-118

**Duets Laser XT Brown/White 1/8" 2-Ply**



L-111-106

**Duets Laser XT White/Black 1/16" 2-Ply**

**Normally Stock Product**



L-111-108

**Duets Laser XT White/Black 1/8" 2-Ply**



L-111-108-T

**Duets Laser XT White/Black 1/8" 3-Ply**



L-111-136

**Duets Laser XT White/Red 1/16" 2-Ply**

**Normally Stock Product**



L-111-156

**Duets Laser XT White/Blue 1/16" 2-Ply**



L-111-176

**Duets Laser XT White/Spring Green 1/16" 2-Ply**



L-111-186

**Duets Laser XT White/Evergreen 1/16" 2-Ply**



L-112-116

**Duets Laser Indoor Dove Grey/White 1/16" 2-Ply**

**Normally Stock Product**



L-113-106

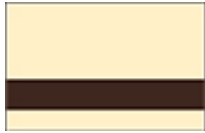
**Duets Laser XT Cool Grey/Black 1/16" 2-Ply**

**Normally Stock Product**



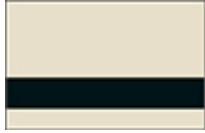
L-113-108

**Duets Laser XT Cool Grey/Black 1/8" 2-Ply**



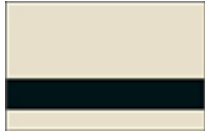
L-114-166

**Duets Laser XT Beige/Chocolate Brown 1/16" 2-Ply**



L-115-106

**Duets Laser XT Khaki/Black 1/16" 2-Ply**



L-115-108

**Duets Laser XT Khaki/Black 1/8" 2-Ply**



L-116-106

**Duets Laser XT Yellow/Black 1/16" 2-Ply**

**Normally Stock Product**



L-116-108

**Duets Laser XT Yellow/Black 1/8" 2-Ply**



L-116-108-T

**Duets Laser XT Yellow/Black 1/8" 3-Ply**



L-116-136

**Duets Laser XT Yellow/Red 1/16" 2-Ply**

**Normally Stock Product**



L-117-116

**Duets Laser XT Maroon/White 1/16" 2-Ply**



L-117-118

**Duets Laser XT Maroon/White 1/8" 2-Ply**



L-118-116

**Duets Laser XT Grey/White 1/16" 2-Ply**



L-118-118

**Duets Laser XT Grey/White 1/8" 2-Ply**



L-118-118-T

**Duets Laser XT Grey/White 1/8" 3-Ply**



L-119-106

**Duets Laser XT Pink/Black 1/16" 2-Ply**



L-119-108

**Duets Laser XT Pink/Black 1/8" 2-Ply**



L-119-116

**Duets Laser XT Pink/White 1/16" 2-Ply**



L-119-118

**Duets Laser XT Pink/White 1/8" 2-Ply**



L-120-116

**Duets Laser XT Purple/White 1/16" 2-Ply**



L-120-118

**Duets Laser XT Purple/White 1/8" 2-Ply**



L-121-116

**Duets Laser XT Light Blue/White 1/16" 2-Ply**



L-121-118

**Duets Laser XT Light Blue/White 1/8" 2-Ply**



L-122-116

**Duets Laser XT Light Green/White 1/16" 2-Ply**



L-122-118

**Duets Laser XT Light Green/White 1/8" 2-Ply**



L-901-106

**Duets Laser XT Metals Brushed Stainless/Black 1/16" 2-Ply**

**Normally Stock Product**



L-901-108

**Duets Laser XT Metals Brushed Stainless/Black 1/8" 2-Ply**



L-901-136

**Duets Laser XT Metals Brushed Stainless/Red 1/16" 2-Ply**



L-901-138

**Duets Laser XT Metals Brushed Stainless/Red 1/8" 2-Ply**



L-901-156

**Duets Laser XT Metals Brushed Stainless/Blue 1/16" 2-Ply**



L-901-158

**Duets Laser XT Metals Brushed Stainless/Blue 1/8" 2-Ply**



L-902-106

**Duets Laser XT Metals Brushed Nickel/Black 1/16" 2-Ply**



L-902-108

**Duets Laser XT Metals Brushed Nickel/Black 1/8" 2-Ply**



L-903-106

**Duets Laser XT Metals Brushed Old Gold/Black 1/16" 2-Ply**



L-903-108

**Duets Laser XT Metals Brushed Old Gold/Black 1/8" 2-Ply**



L-903-136

**Duets Laser XT Metals Brushed Old Gold/Red 1/16" 2-Ply**



L-903-138

**Duets Laser XT Metals Brushed Old Gold/Red 1/8" 2-Ply**



L-903-156

**Duets Laser XT Metals Brushed Old Gold/Blue 1/16" 2-Ply**



L-903-158

**Duets Laser XT Metals Brushed Old Gold/Blue 1/8" 2-Ply**



L-904-106

Duets Laser XT Metals Brushed Copper/Black 1/16" 2-Ply



L-904-108

Duets Laser XT Metals Brushed Copper/Black 1/8" 2-Ply



L-904-186

Duets Laser XT Metals Brushed Copper/Evergreen 1/16" 2-Ply

**DUETS - LASER ENGRAVING STOCK -TECHNICAL DATA**

Rev. 5/11/16

PROPERTIES	TEST METHOD	UNITS	VALUES
<b>Mechanical Properties</b>			
Tensile Strength	ASTM D-638	Psi (MPa)	6,510 (39)
Elongation	ASTM D-638	Percent	38
Modulus of Elasticity	ASTM D-638	Psi (MPa)	255,000 (1,760)
Flexural Strength	ASTM D-790	Psi (MPa)	8,890 (61)
Impact Strength-Izod (notched, ¼")	ASTM D-256	Ft-lb/in. (J/m)	1-2 (66)
Impact Strength-Falling Weight (1/8")	ASTM D-3029 GB	In-lb (J)	56 (6.33)
<b>Thermal Properties</b>			
Vicat Softening Temperature	ASTM D-1525 (rate A)	°F (°C)	227 (108)
Heat Deflection-Under Load	ASTM D-648 (264 ps;)	°F (°C)	176 (80)
Average Melt Flow Rate	ASTM D-1238 (3.8/230)	g/10 min	0.8
Coefficient of Linear Thermal Expansion	ASTM D-696	cm-cm/°C	12 x 10 <sup>-5</sup>
Molding Shrinkage	ASTM D-955	Percent	0.2-0.6
<b>Other Properties</b>			
Specific Gravity	ASTM D-792		1.16
Flame Spread	ASTM E-84		115
Smoke Dev. Index	ASTM D-2843		550
Self Ignition Temperature	ASTM D-1929		833
Thermal Expansion Rate			.00023/in.
General	ASTM D-4802*	n/a	n/a

\*Category B-1 and B-2